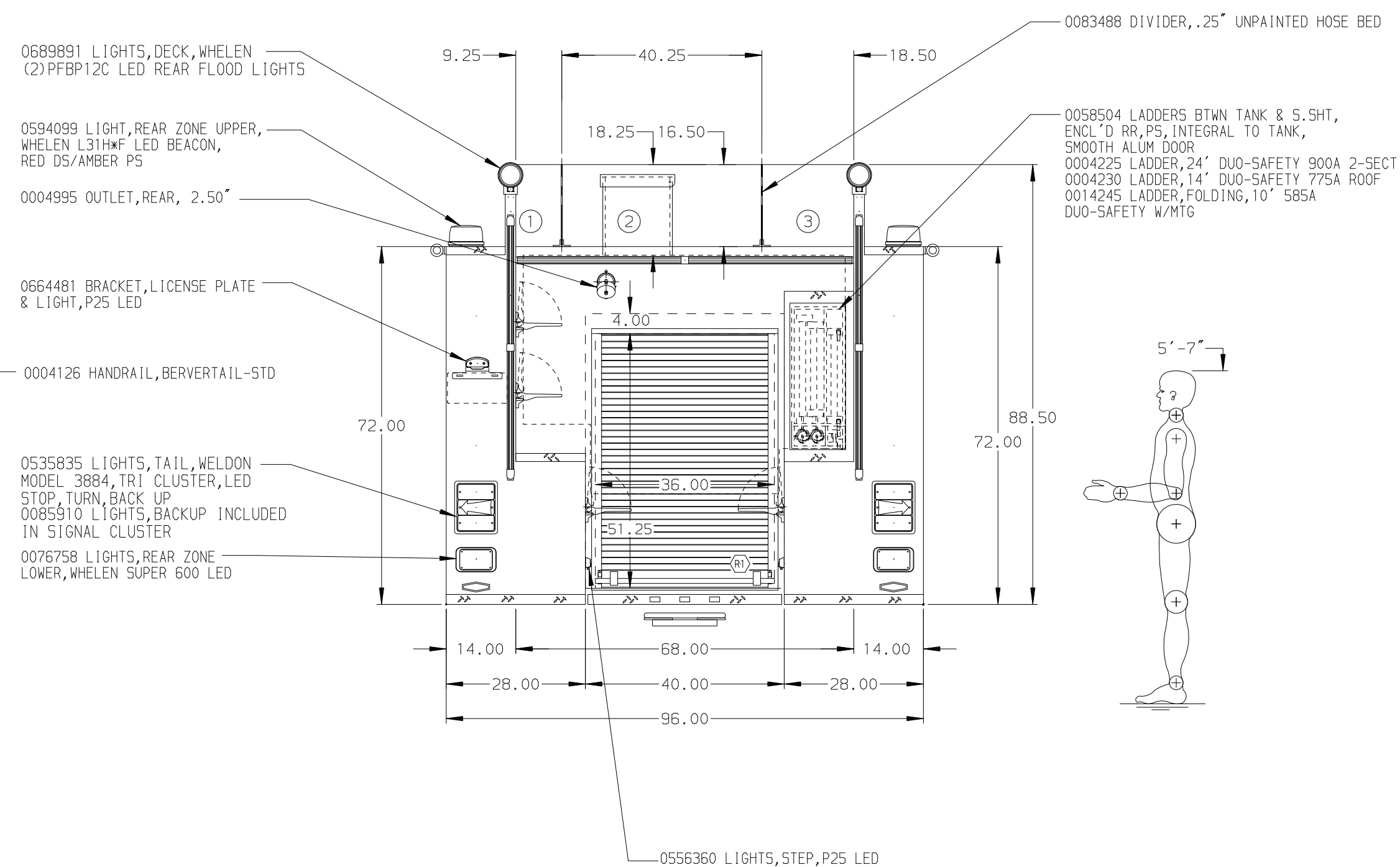
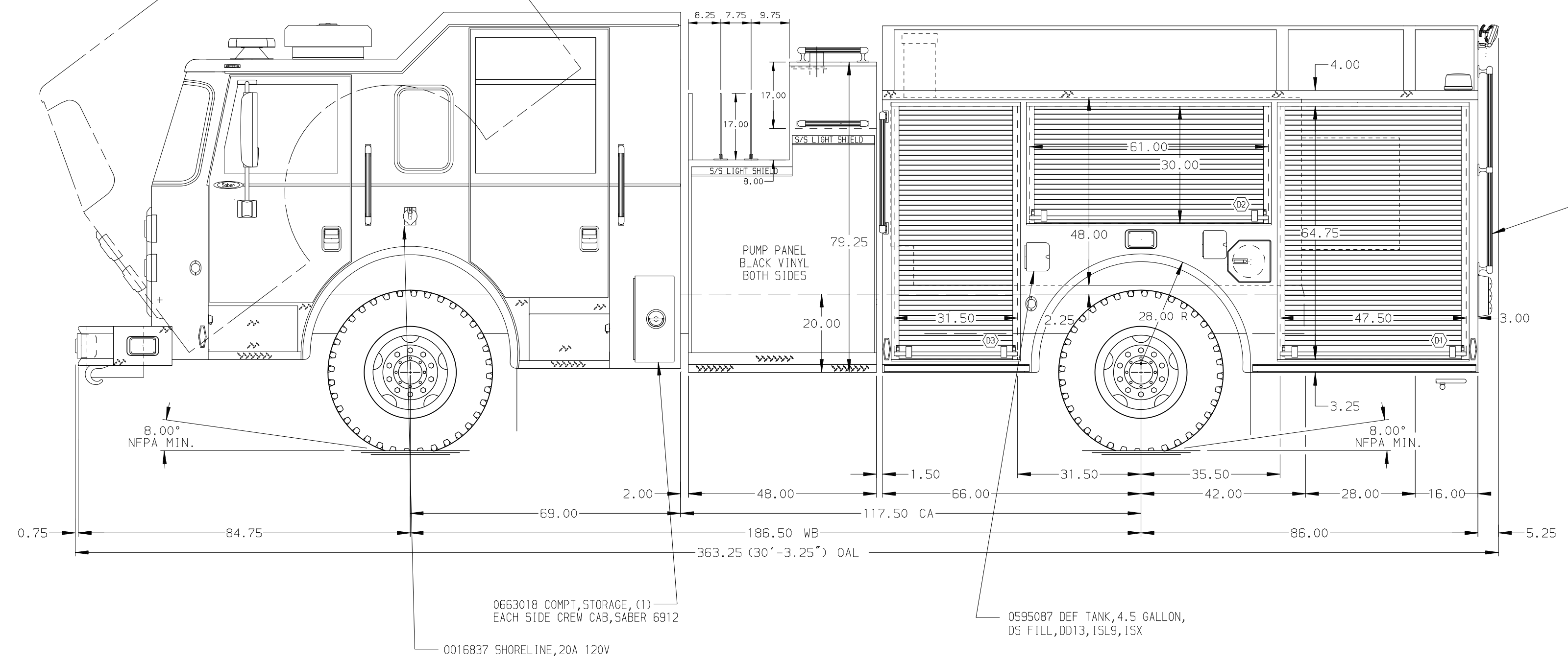


HOSEBED CAPACITIES

① 300' OF 2.50" D.J. HOSE

② 1000' OF 5.00" D.J. HOSE

③ 700' OF 2.50" D.J. HOSE



ALUMINUM BODY

NOTE
DIMENSIONS SHOWN ARE APPROXIMATE AND ARE SUBJECT TO MINOR DEVIATIONS AS MAY OCCUR OR BE NECESSARY IN CONSTRUCTION. MINOR DETAILS NOT SHOWN.

CUSTOMER APPROVAL				Pierce MANUFACTURING INC.	JOB NO.	26376
APPROVED BY: _____					1250-D-1000P, 152" FULL HEIGHT FRONT & REAR, FDLER 48" SIDE CONTROL, (3) CROSSLAYS	SCALE
DATE: _____				1:24		
CHASSIS DATA				TITLE	DRAWN BY	09NOV12
MAKE				FOR	SHI	
PIERCE					CHECKED BY	12NOV12
MODEL					BZ1	
SAF6912				DWG NO.	26376AD	
REV					SHEET SIZE	SHEET NO.
					D	1 OF 1